

FACEMASK FITTING AND ADJUSTMENT PROCEDURE

Size Selection

The facemask is available in two (2) sizes; BLUE (small) and RED (medium/large).

The facemask size is identified by the colour of the oxygen supply hose and the triangular logo in the front of the facemask, as shown in fig 1 below.



Fig 1

Face Measurement for Facemask

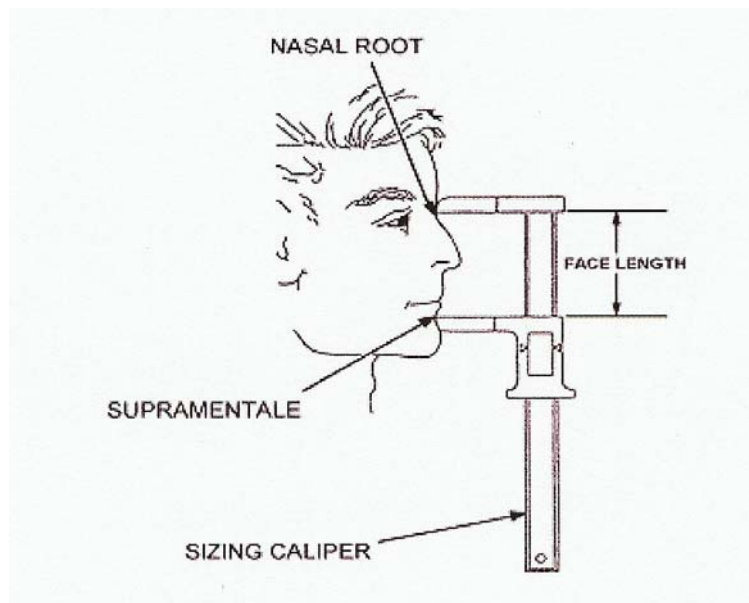


Fig 2

Facemask Size	Face length – Nasal root (Nasion) to Supramentale (Sulcus) in mm
BLUE	Between 74 and 94mm
RED	Between 85 and 104mm